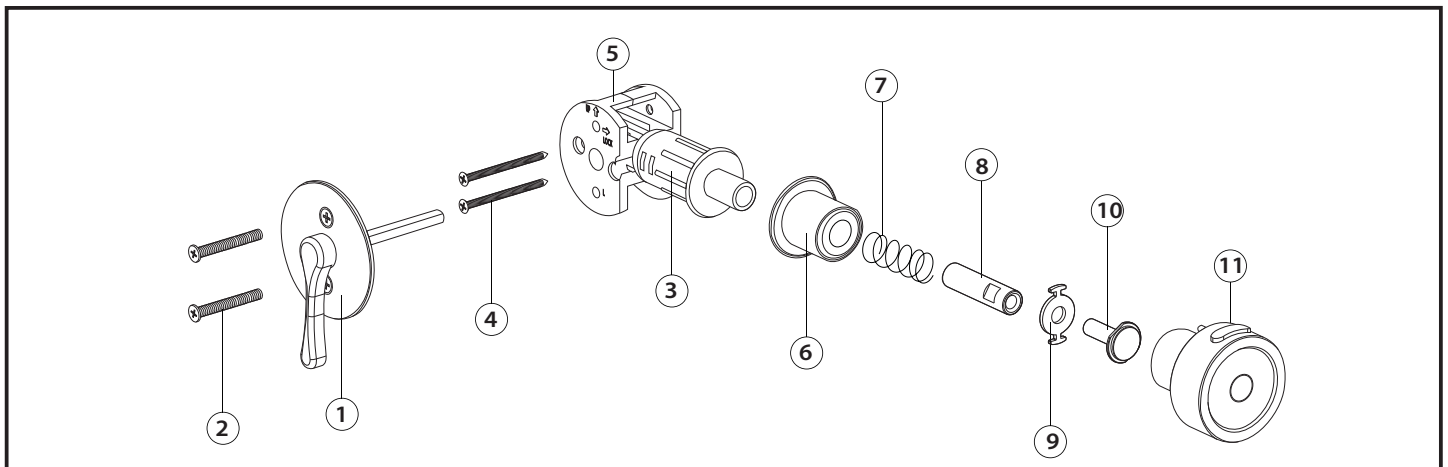
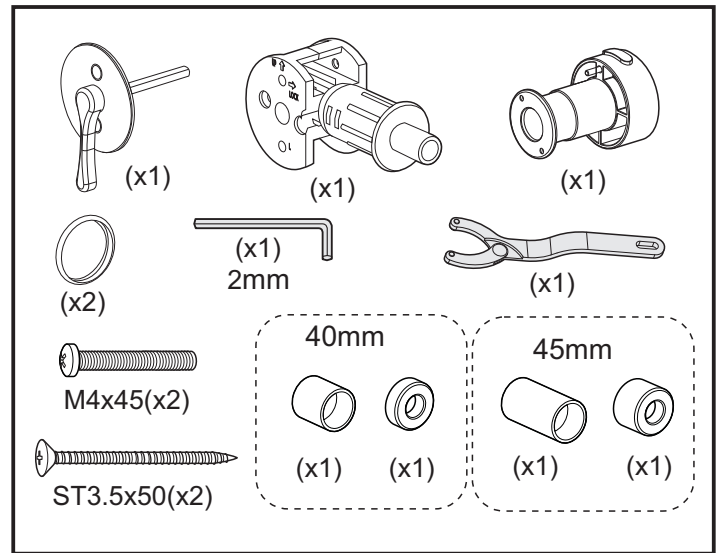
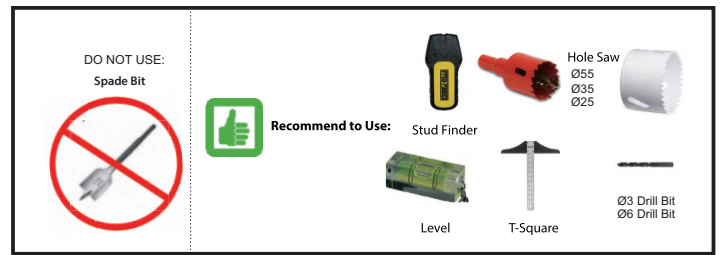
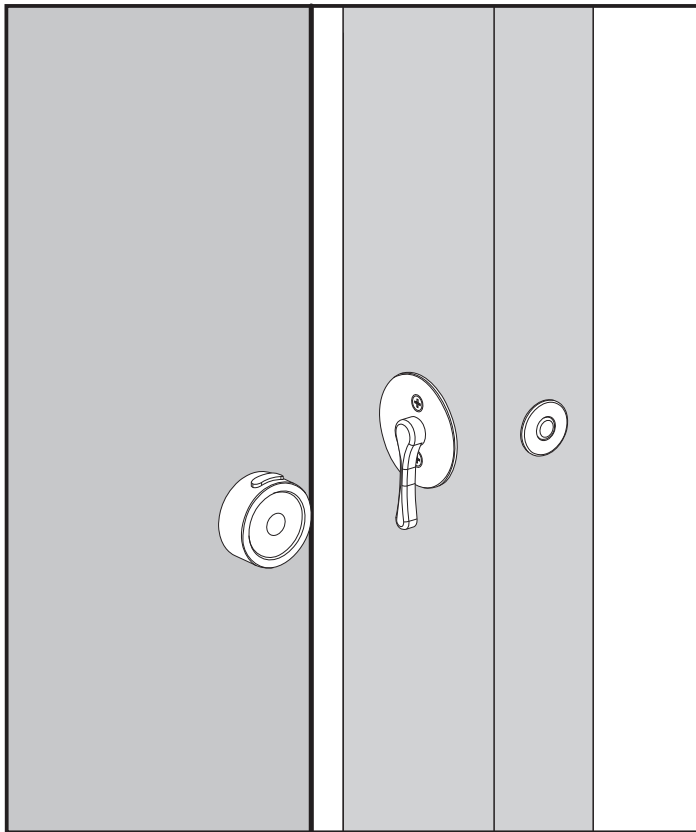
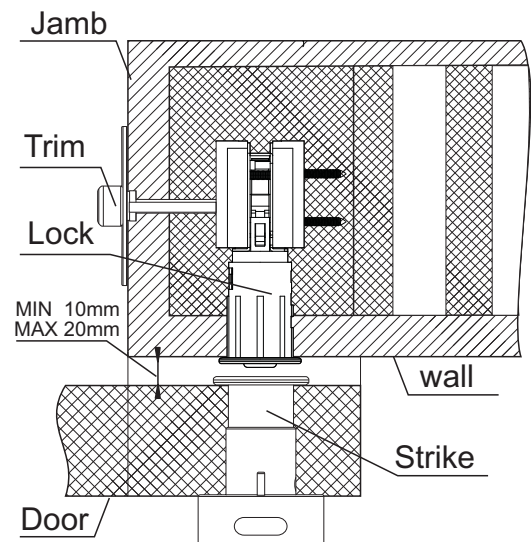


# Installation manual

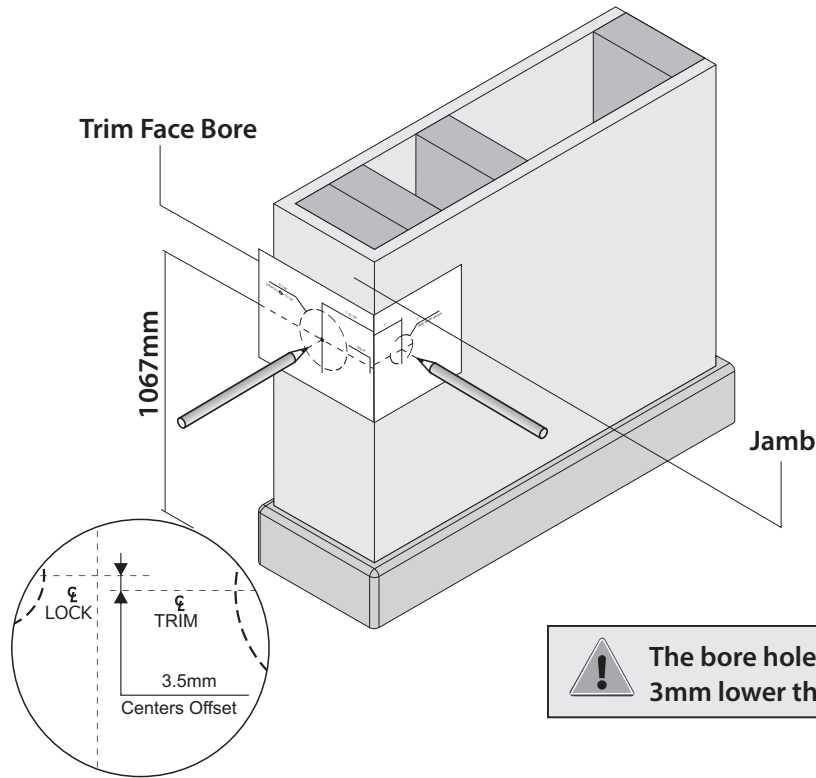


Items	No.	Parts Description
Trim Parts	1A	Face Fixing Trim with spindle
	1B	Face Fixing Trim with spindle
	1C	Face Fixing Trim with spindle
Lock	2	M4 x 35 Slotted Head Screws
	3	Barn Door Lock
	4	ST3.5 x 50 Wood Screws
Strike	5	Lock Bracket
	6	Dust Proof Strike
	7	Spring
	8	Sleeve
	9	Washers
Others	10	Screws
	11	Button



**1**

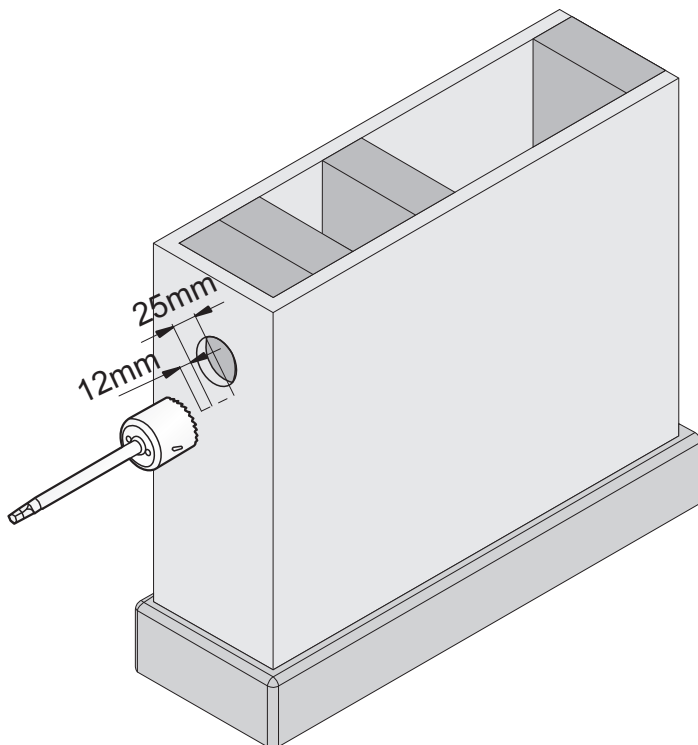
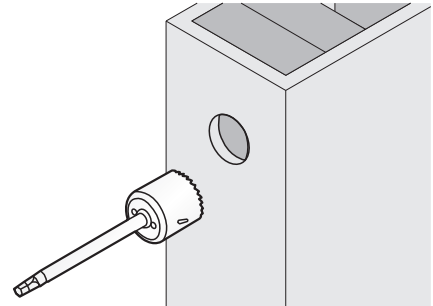
Remove Barn Door. Use template to mark pilot hole.



The bore hole on the Jamb side is offset 3mm lower than wall-side bore.

**2**

1. With a  $\varnothing 55$  hole saw, drill on Jamb side in accordance with following steps.

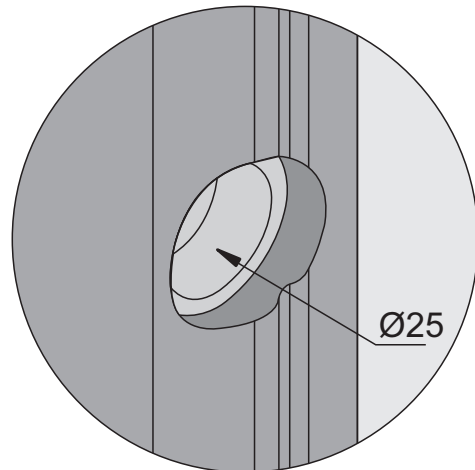
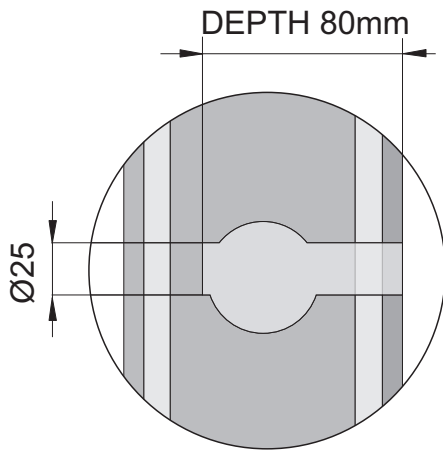
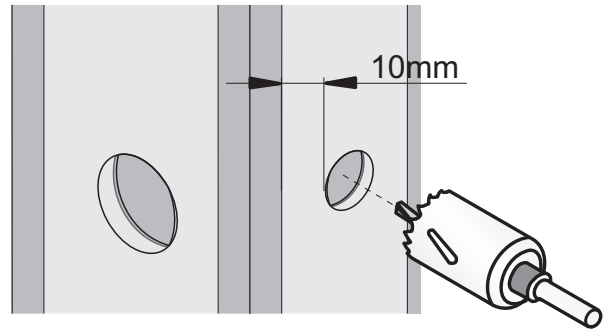


**Without Casing:**

- a. Drill through drywall approx. 12mm to locate first wood stud.
- b. Continue drilling 12mm into the stud.

3

1. Double check lock bore distance from Step 1. Refer to template markings to ensure both lock and strike pilot holes are within door overlap requirements. Keep 10mm safety margin to edges.



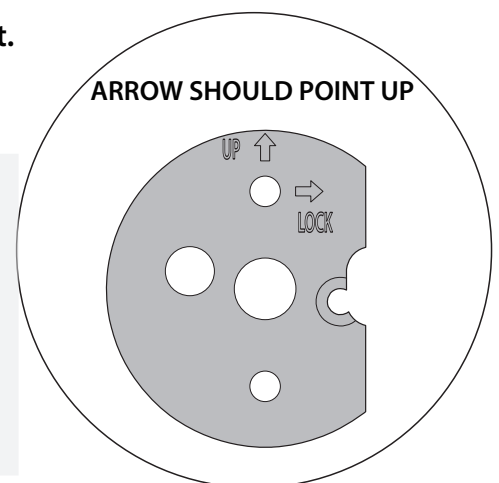
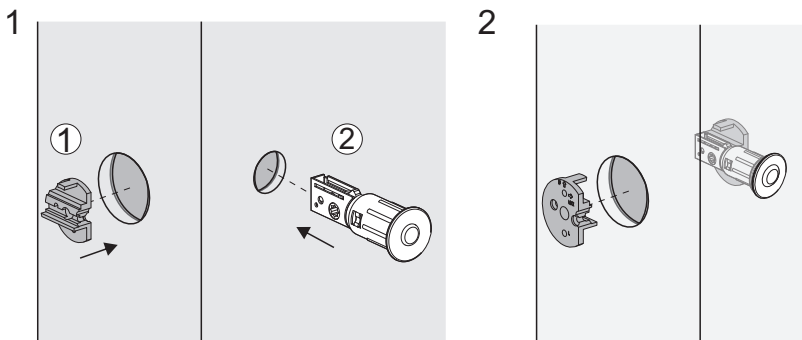
Do not drill too deep, you may damage the wall on the other side.

4

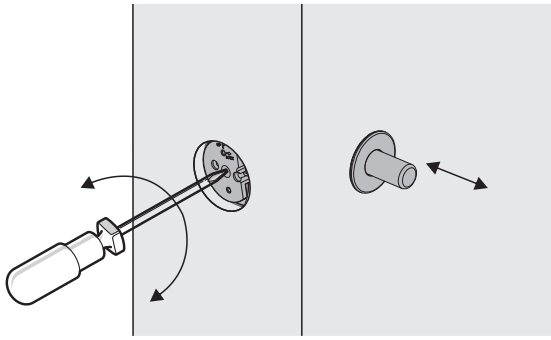
A) For drywall and casing less than 40mm:

4.1) Insert bracket into trim bore

4.2) Insert lock bolt into lock bore and fit into bracket slot.

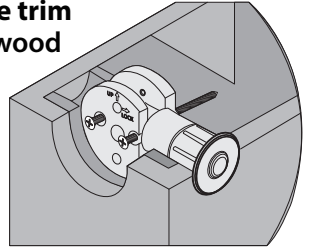


**TIP:** Before drilling, cover area around the bore hole with masking tape; if not smooth, troubleshoot as follows:



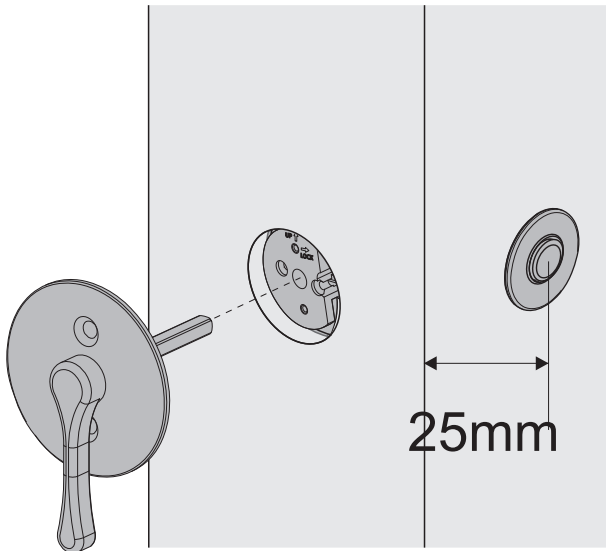
- Check  $\varnothing 55$  trim bore dimensions
- Ensure hole is free of debris
- Make sure 25mm lock bore is perpendicular to trim bore
- Check lock by removing it from bore and throwing the bolt. Adjust wall prep as needed

**4.5) Fasten the two wood screws inside the trim bore hole through lock body and into wood stud.**

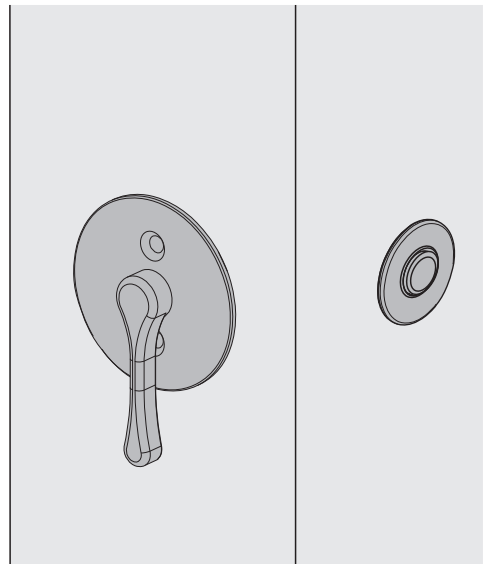


**5**

**1. Cut spindle and screw to accommodate wall side backset.**

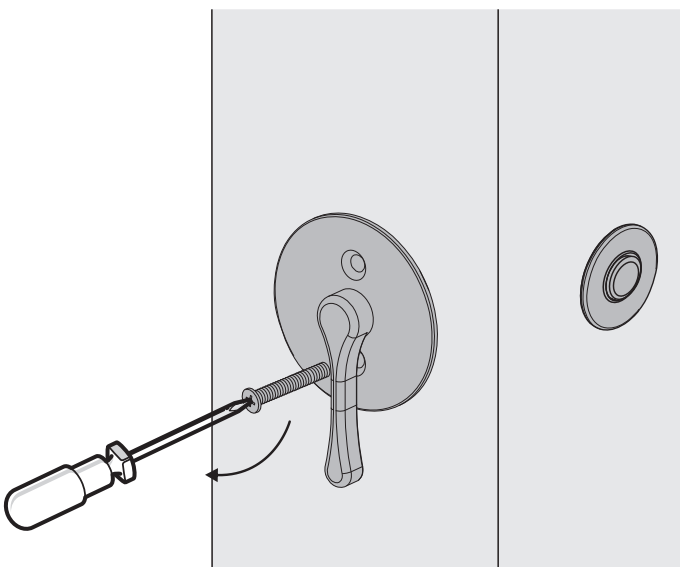


**2. Insert trim into spindle hole. Use thumb turn to test lock bolt movement.**

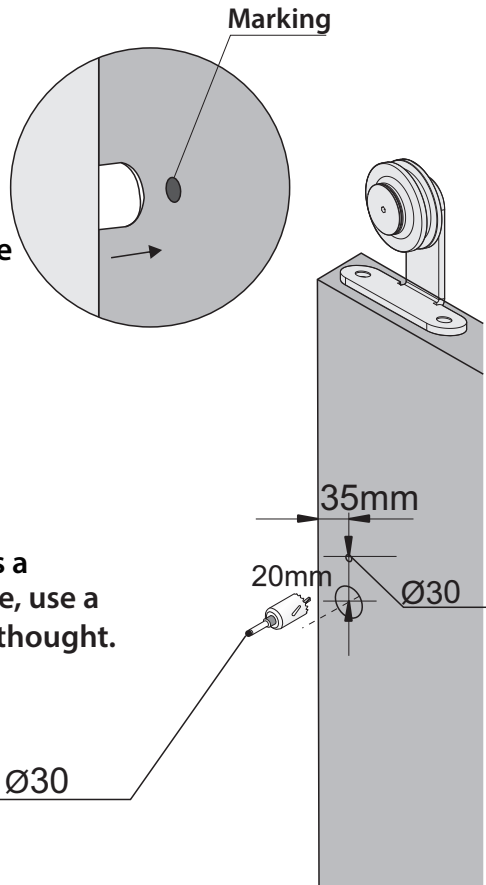


**3. Fasten trim screws until trim is tight to jamb surface.**

**NOTE: Do not over tighten.**



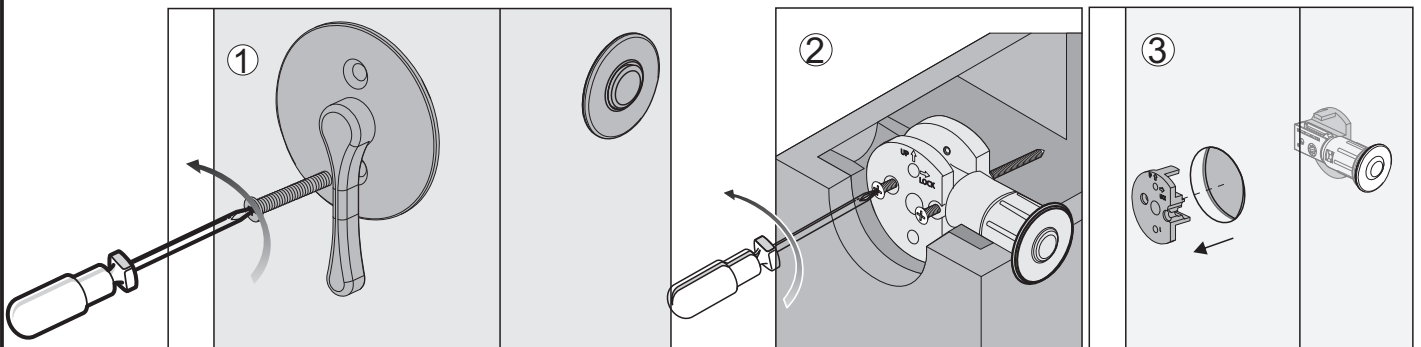
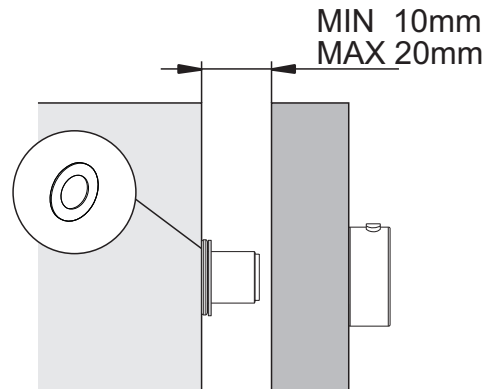
1. Move the Barn Door to the Closed position; throw the lock bolt to mark the exact strike center position. Make sure this location is minimum 25mm to the edge of the door.

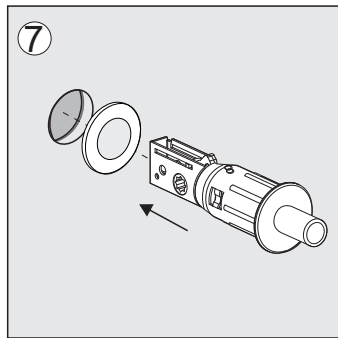
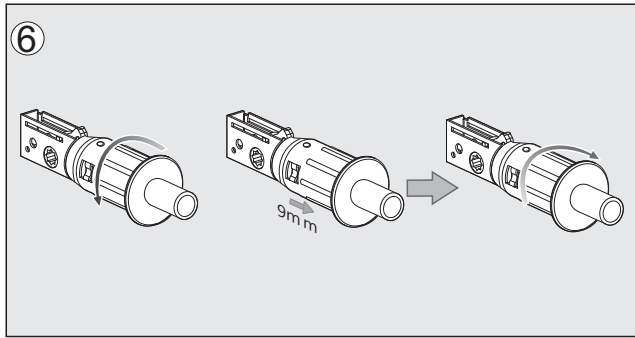
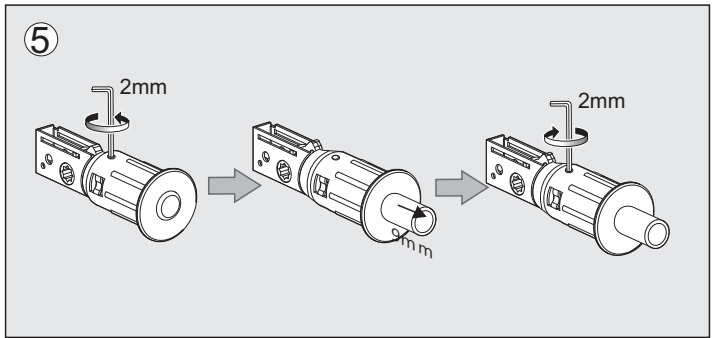
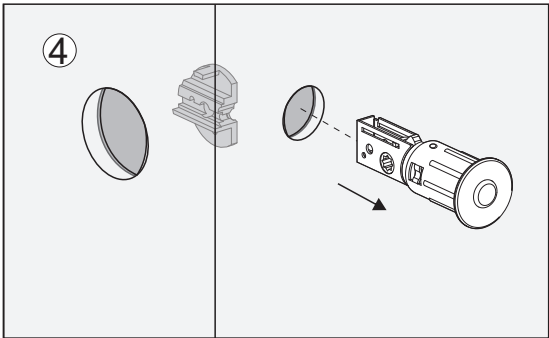


2. Using the strike center position as a guide, With the pilot hole as guide, use a 25mm diameter hole saw to drill through.

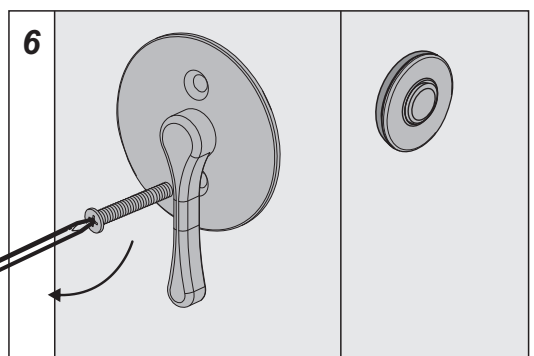
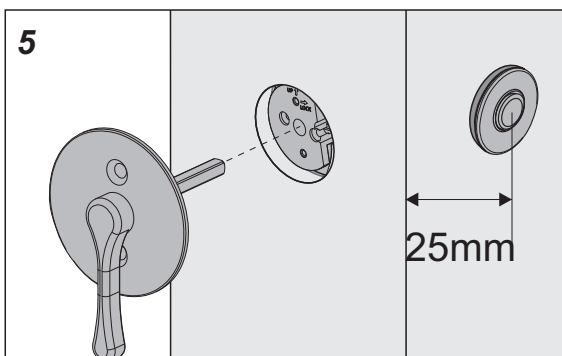
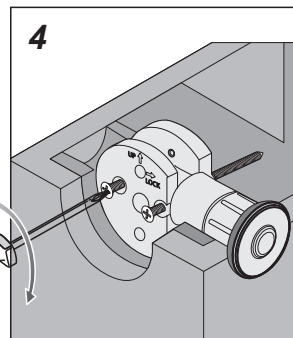
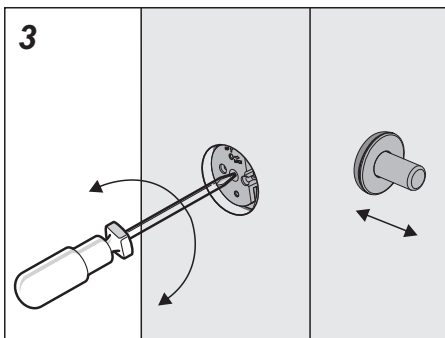
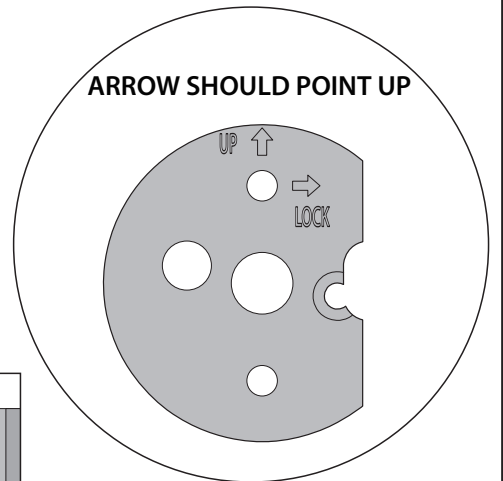
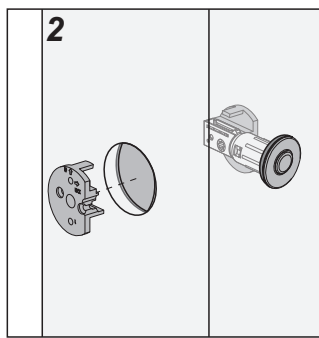
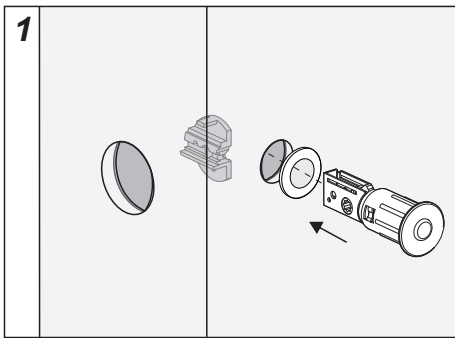
Ø30

**Note:** Standard Barn Door to wall clearance is approximately 10mm to 12mm. Install additional spacer as needed behind the strike faceplate if the door to wall clearance is over 12mm. Additional spacers can support maximum clearance of 20mm between door and wall.



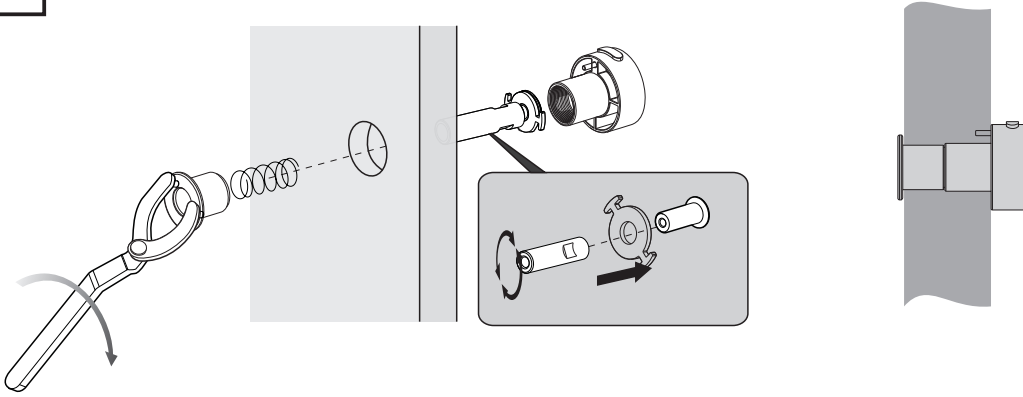


7

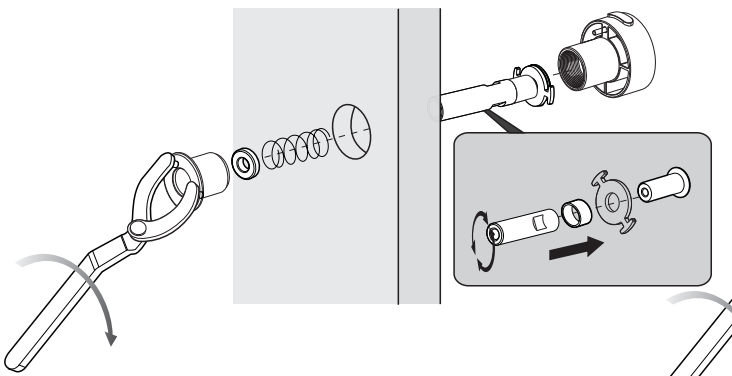


8

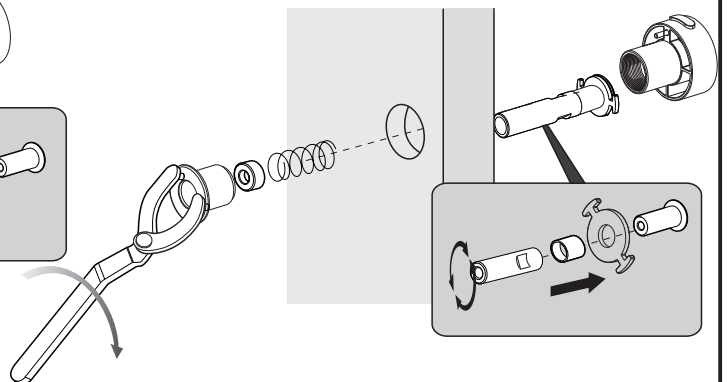
When the width of the door is 35 mm:



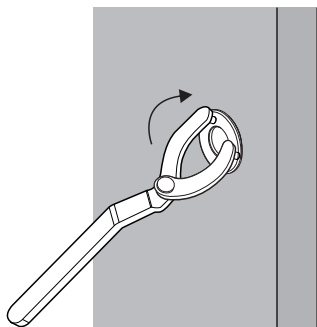
When the width of the door is 40 mm:



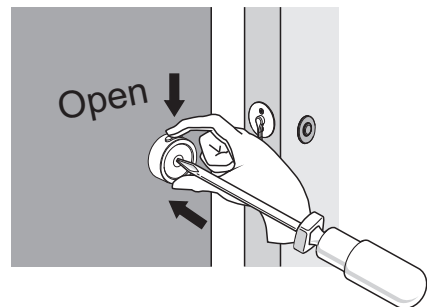
When the width of the door is 45 mm:



4. Install break-away screw and tighten with Allen wrench. DO NOT OVER TIGHTEN.



5. Push the black button take on which is on the top of the back and then Use screw to push through center hole on release to push lock bolt back and unlock door.



use the drawer screw or something thin been to pen the door in case of urgency.